

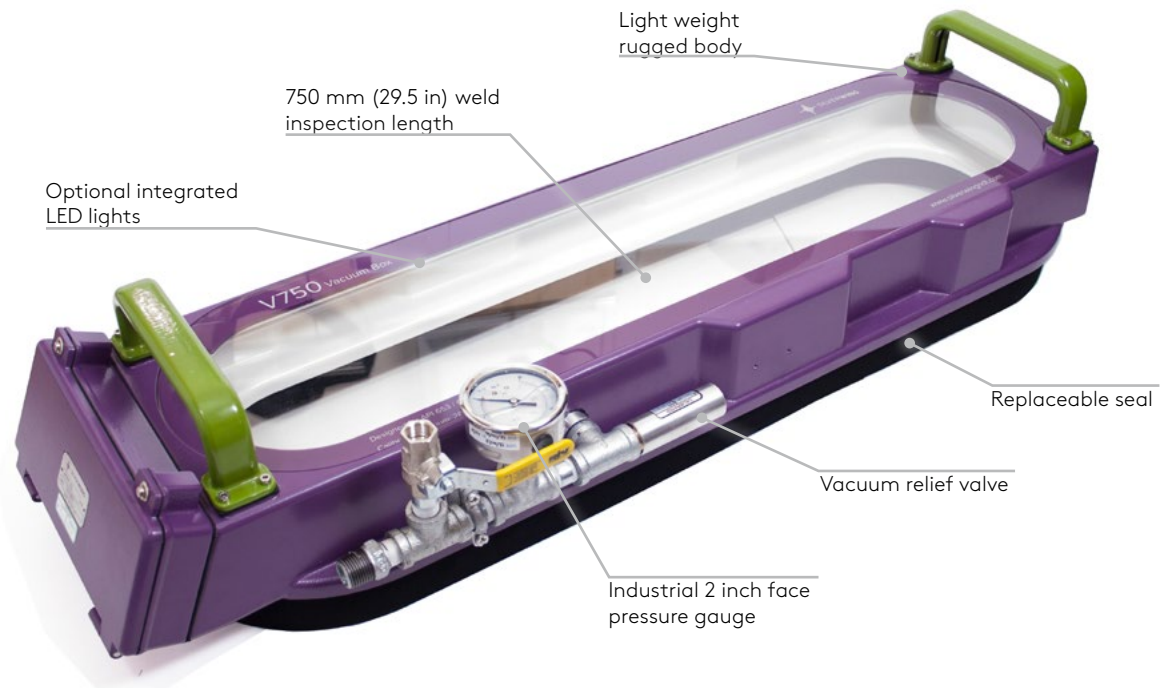
SILVERWING V750 VACUUM BOX

Bubble leak testing of tank bottom plate welds and shell
to bottom plate welds



STORAGE TANK PLATE WELD INSPECTION

V750, the technician's favourite vacuum box designed for efficient bubble leak testing of tank bottom plate welds.



V750

Bubble leak testing, or vacuum box testing, is an integral part of a tank inspection process as recommended by API 650 / 653 and other international standards to establish the condition of a tank bottom plate weld or shell to bottom plate weld.

Vacuum box testing can be an arduous and labor intensive task, continuous research and development has resulted in the V750. With its light weight rugged construction, internal LED lights and a 750 mm (29.5 in) weld inspection length V750 will improve inspection times and reduce operator fatigue.

SAFETY RELIEF VALVE

The calibrated vacuum relief valve ensures the correct vacuum is generated as recommended by international standards.

The advantage of the relief valve is, once the required vacuum has been generated the relief valve opens and maintains the required vacuum preventing too great a vacuum being generated which can damage the vacuum box and cause injury to the operator.

INTEGRATED LED LIGHTS

The optional integrated LED lights provide the required light intensity as specified by API, ASME and other standards. Illuminating the weld from inside the vacuum box ensures the highest possible detection rates.

Screen glare and shadows from external light sources are eliminated, and all parts of the test area are fully lit for the duration of the test. There is no requirement for the operator to move external lighting around the tank, improving the efficiency and effectiveness of the inspection.

CALIBRATED GAUGE

V750 vacuum box is supplied with an industrial 2 inch face pressure gauge rated to 30 in Hg as required by ASME V Article 10 – Bubble Test Vacuum Box Technique.

The calibrated gauge provides inspection confidence by ensuring the correct vacuum is generated as recommended by the associated inspection regulations and standards.

INTELLIGENT DESIGN. BETTER RESULTS.

700mm weld test length, integrated LED's, vacuum relief valves, light weight cast aluminium body and improved operators experience.



V750 KEY FEATURES

- Integrated LED to maintain correct light level (optional)
- Higher productivity due to 750 mm length
- New seal design to improve initial vacuum
- Calibrated vacuum gauge
- Calibrated relief valve to control vacuum
- Increased efficiency
- User replaceable seals
- Rugged light weight cast aluminium body

GENERAL KEY FEATURES

- Electric pump, compressor or combined versions
- High & low vacuum variants
- Tank bottom and shell to bottom weld models
- Field proven durability & reliability

ELECTRIC PUMP OR COMPRESSOR DRIVEN

Dependant on the model the vacuum is generated by the use of an electric vacuum pump or by use of an integrated Air Vacuum Generator (AVG) and external compressor. Inspection companies tend to use the electric pump due to its greater flexibility while construction companies tend to use the AVG based systems. The flexible option are the Dual models which can be used with either an electric pump or compressor.

V400 CORNER MODEL

V400 has been design for the inspection of shell to bottom plate welds, the corner design allows for a fast and efficient means to testing these critical welds tank with a minimum diameter of 5 metres

V400LP AND V600LP LOW PRESSURE MODELS

Vacuum boxes are rated to either 20 inch Hg (10psi/0.7bar) which are recommended for in-services tanks or 10 inch Hg (5psi/0.37bar) which are recommended for new build tanks.

SPECIFICATIONS

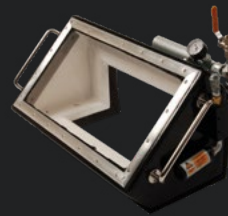
V750

Dimensions (W×H×D)	935 x 190 x 265 mm
Weight:	10.5 kg
Pressure rating	20 inch Hg
Weld test length	750 mm



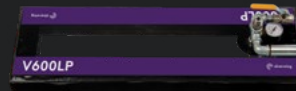
V400

Dimensions (W×H×D)	660 x 380 x 310 mm
Weight:	8.95 kg
Pressure rating	20 inch Hg
Weld test length	400 mm
Min tank diameter	5 metres



V600LP

Dimensions (W×H×D)	660 x 150 x 220 mm
Weight:	2.75 kg
Pressure rating	10 inch Hg
Weld test length	600 mm



V400LP

Dimensions (W×H×D)	540 x 220 x 220 mm
Weight:	4 kg
Pressure rating	10 inch Hg
Weld test length	400 mm
Min tank diameter	5 metres



ELECTRIC VACUUM PUMP - VP110 / VP240

Dimensions (W×H×D)	500 x 310 x 250 mm
Weight	27.70 kg
Power	110 v or 240 v



The information in this document is accurate as of its publication. Actual products may differ from those presented herein. © 2018 Eddyfi UK LTD. Eddyfi, Silverwing, V750, V600 and their associated logos are trademarks or registered trademarks of Eddyfi in the United States and/or other countries. Eddyfi reserves itself the right to change product offerings and specifications without notice.10/10/18

